

H3333 CAPACITANCE DETECTOR



The H3333 Capacitance Detector is a center guide detector featuring superior immunity to strip passline change, tilt, and wavy edges. Its capacitance-sensing design provides the advantage of simple, virtually maintenance-free operation. Shielded construction allows placement in areas with high operator activity or machinery movement. Detector output is unaffected by occasional moisture dripping from the strip.



Featuring advanced digital signal processing, the H3333 requires no operator adjustments. There is no field calibration required. The strip does not have to be cut or removed to accommodate the detector. The only setup required is a simple pushbutton input to establish the zero point for the detector. Due to its extremely linear output, the H3333 tolerates large strip-width variations with negligible effect on the guide point. Additionally, the internal processor constantly monitors signal quality and provides a relay output to indicate any possible problem with detector operation.

The H3333 is available in two basic temperature ratings. The H3333A, with integral electronics, is suitable for use in ambient temperatures up to 130° F (55° C). The H3333E, with remote electronics, is suitable for use in ambient temperatures up to 392° F (200° C). The H3333 can be used with any conductive strip. Process line applications include galvanizing, paint, tin, and pickle lines. The H3333 can be used to retrofit many applications currently using optical detectors, providing freedom from the maintenance associated with optical systems.

SPECIFICATIONS

Housing:

Anodized structural aluminum

Operating temperature:

H3333A: 32–130 F (0–55 C)

H3333E: 32–392 F (0–200 C) Electronic enclosure limited to 130 F (55C).

Guidepoint shift due to passline variation:

Less than 0.02" per inch of passline change.

Guidepoint shift due to strip width variation:

Less than 0.01" per inch of width change.

Power supply:

±14.25 to ±15.75 V dc at 200 mA max.

Outputs:

Edge 1: ±10 V dc

Edge 2: ±10 V dc

Edge 1 – Edge 2: ±10 V dc

Output impedance:

100 ohms

Frequency response:

dc to 10 Hz

Output sensitivity:

0.35 V per inch nominal

Alarm relay output:

2 amp at 24 V ac/dc

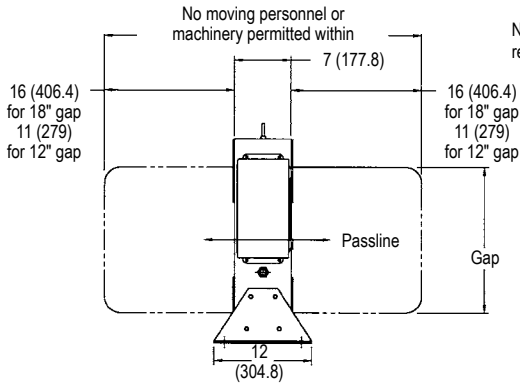
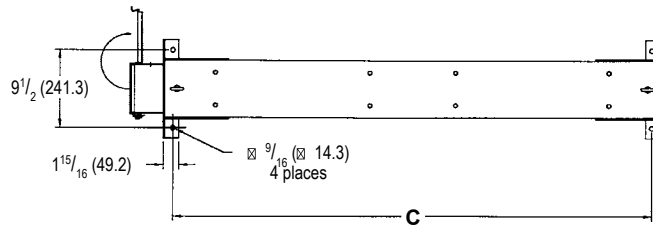
KEY FEATURES

- No field calibration required
- Virtually no maintenance
- Self diagnostics with fault annunciation
- No AC power required
- Output unaffected by passline changes or wavy edges
- Senses ferrous and non-ferrous metals
- Modular assembly allows easy installation without cutting strip

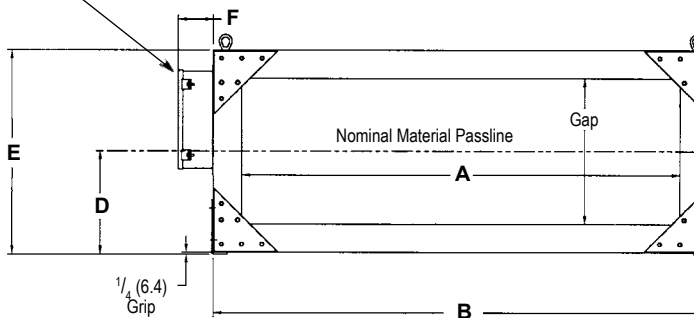
H3333 CAPACITANCE DETECTOR

DIMENSIONS

Inches (mm)



Note: For H3333E models, customer must remotely relocate control electronics.



⊗ This side may be disassembled for installation around existing strips.

Gap Model No.	in. (mm)	Strip width ±3" (150 mm) offset		Weight dimensions in inches (mm)						Approx. lb (kg)
		min. width	max. width	A	B	C	D	E	F	
H3333A-18-54	18	12	30	54	61	59	12 ³ / ₄	25 ¹ / ₄	4 ⁹ / ₃₂	100
H3333E-18-54	(457)	(305)	(762)	(1372)	(1549)	(1499)	(324)	(641)	(109)	(45.5)
H3333A-12-54	12	12	30	54	61	59	9 ³ / ₄	19 ¹ / ₄	4 ²³ / ₃₂	95
H3333E-12-54	(305)	(305)	(762)	(1372)	(1549)	(1499)	(247.7)	(489)	(120)	(43.1)
H3333A-18-78	18	12	54	78	85	83	12 ³ / ₄	25 ¹ / ₄	4 ⁹ / ₃₂	125
H3333E-18-78	(457)	(305)	(1372)	(1981)	(2159)	(2108)	(324)	(641)	(109)	(56.8)
H3333A-12-78	12	12	54	78	85	83	9 ³ / ₄	19 ¹ / ₄	4 ²³ / ₃₂	120
H3333E-12-78	(305)	(305)	(1372)	(1981)	(2159)	(2108)	(247.7)	(489)	(120)	(54.4)
H3333A-18-96	18	12	72	96	103	101	12 ³ / ₄	25 ¹ / ₄	4 ⁹ / ₃₂	140
H3333E-18-96	(457)	(305)	(1829)	(2438)	(2616)	(2565)	(324)	(641)	(109)	(63.5)
H3333A-12-96	12	12	72	96	103	101	9 ³ / ₄	19 ¹ / ₄	4 ²³ / ₃₂	135
H3333E-12-96	(305)	(305)	(1829)	(2438)	(2616)	(2565)	(247.7)	(489)	(120)	(61.2)
H3333A-18-120	18	12	96	120	127	125	12 ³ / ₄	25 ¹ / ₄	4 ⁹ / ₃₂	165
H3333E-18-120	(457)	(305)	(2438)	(3048)	(3226)	(3175)	(324)	(641)	(109)	(74.8)
H3333A-12-120	12	12	96	120	127	125	9 ³ / ₄	19 ¹ / ₄	4 ²³ / ₃₂	160
H3333E-12-120	(305)	(305)	(2438)	(3048)	(3226)	(3175)	(247.7)	(489)	(120)	(72.5)



NORTH, CENTRAL AND SOUTH AMERICA

Tel +1.405.755.1600
Fax +1.405.755.8425
sales@maxcessintl.com
www.maxcessintl.com

INDIA

Tel +91.22.27602633
Fax +91.22.27602634
india@maxcessintl.com
www.maxcess.in

EUROPE, MIDDLE EAST AND AFRICA

Tel +49.6195.7002.0
Fax +49.6195.7002.933
sales@maxcess.eu
www.maxcess.eu

JAPAN

Tel +81.43.421.1622
Fax +81.43.421.2895
japan@maxcessintl.com
www.maxcess.jp

CHINA

Tel +86.756.881.9398
Fax +86.756.881.9393
info@maxcessintl.com.cn
www.maxcessintl.com.cn

KOREA, TAIWAN AND SE ASIA

asia@maxcessintl.com
www.maxcessintl.asia